



[WWW.POWERMAXLATAM.COM](http://WWW.POWERMAXLATAM.COM)

# COUPLER 5/8kV MEDIUM VOLTAGE FOR FIXED AND PORTABLE CABLE SYSTEMS



Couplers are utilized in industrial, oil and gas, surface and underground mining, strip, and pit operations. Couplers provide safe, convenient means for connecting fixed or portable cable rated up to 8,000 volt and up to 630 Amperes, copper or aluminum conductor to mining equipment, electric shovels, drag lines, loaders, barges, tunneling machines, portable substations, portable junctionboxes, or for joining lengths of high voltage cables.

## CHARACTERISTICS

- Corrosion resistant aluminum ASTM / ALCAN.
- Durable insulators that resist cracking or other defects that can lead to tracking.
- Copper male and female contacts 99.9% ASTM B-187.
- Cable entry and gripping, consisting of a clamp and sealing arrangement, which will provide a secure grip on the cable and a watertight seal.
- Weather resistant: IP68.
- Replaceable parts.
- The use of compound insulation is recommended for place with high humidity and several temperature changes



## Electrical Type Test Results

- ✓ 1 minute dry withstand AC: 35 kV
- ✓ 15 minute dry withstand AC: 15 kV
- ✓ 15 minute dry withstand DC: 45 kV
- ✓ Impulse voltage 1.2x50 $\mu$ s: 75kV BIL
- ✓ IEC 60502-4: Test requirements on accessories for cables with rated voltages from 6 kV ( $U_m = 7,2$  kV) up to 30 kV ( $U_m = 36$  kV).
- ✓ IEEE-48: Standard Terminations rated 2.5 kV through 765 kV or Extruded Insulation Rated 2.5 kV through 500 kV.
- ✓ IEC 60529: Degrees of protection IP
- ✓ CAN/CSA M421: The ground pin makes first and breaks last and the pilot pin makes last and breaks first.


## Applications

- ✓ Electric shovels
- ✓ Drilling rigs
- ✓ Tunnel boring machines
- ✓ Pumps
- ✓ Portable substations



# PART NUMBER COUPLER

## 5/8kV 250A

PART NUMBER		DESCRIPTION	REFERENCIAL IMAGE
FEMALE	MALE		
PM0825H-55	PM0825M-55	<b>Coupler 5/8kV - 250A</b> Max diameter. cable: 2.16"(55mm) (3PHASE+1- GROUND+1PILOT)	 <p><b>Weight: 12kg</b> <b>Length: 490mm</b> <b>Values per connector</b></p>
PM0825H-60	PM0825M-60	<b>Coupler 5/8kV - 250A</b> Max diameter. cable: 2.36"(60mm) (3PHASE+1- GROUND+1PILOT)	
PM0825H-65	PM0825M-65	<b>Coupler 5/8kV - 250A</b> Max diameter. cable: 2.55"(65mm) (3PHASE+1- GROUND+1PILOT)	
PM0825H-70	PM0825M-70	<b>Coupler 5/8kV - 250A</b> Max diameter. cable: 2.55"(70mm) (3PHASE+1- GROUND+1PILOT)	
PM0825H-75	PM0825M-75	<b>Coupler 5/8kV - 250A</b> Max diameter. cable: 2.95"(75mm) (3PHASE+1- GROUND+1PILOT)	
PM0825H-80	PM0825M-80	<b>Coupler 5/8kV - 250A</b> Max diameter. cable: 3.15"(80mm) (3PHASE+1- GROUND+1PILOT)	


Add suffix -F for semi-fixed application  
 Add suffix: -MI for mechanical interlocking  
 Add suffix: -MIPL for mechanical interlocking with padlock

# PART NUMBER COUPLER 5/8kV 400A

PART NUMBER		DESCRIPTION	REFERENCIAL IMAGE
FEMALE	MALE		
PM0840H-55	PM0840M-55	<b>Coupler 5/8kV - 400A</b> Max diameter. cable: 2.16"(55mm) (3PHASE+1- GROUND+1PILOT)	 <p><b>Weight: 13.5kg</b> <b>Length: 490mm</b> <b>Values per connector</b></p>
PM0840H-60	PM0840M-60	<b>Coupler 5/8kV - 400A</b> Max diameter. cable: 2.36"(60mm) (3PHASE+1- GROUND+1PILOT)	
PM0840H-65	PM0840M-65	<b>Coupler 5/8kV - 400A</b> Max diameter. cable: 2.55"(65mm) (3PHASE+1- GROUND+1PILOT)	
PM0840H-70	PM0840M-70	<b>Coupler 5/8kV - 400A</b> Max diameter. cable: 2.55"(70mm) (3PHASE+1- GROUND+1PILOT)	
PM0840H-75	PM0840M-75	<b>Coupler 5/8kV - 400A</b> Max diameter. cable: 2.95"(75mm) (3PHASE+1- GROUND+1PILOT)	
PM0840H-80	PM0840M-80	<b>Coupler 5/8kV - 400A</b> Max diameter. cable: 3.15"(80mm) (3PHASE+1- GROUND+1PILOT)	
PM0840H-85	PM0840M-85	<b>Coupler 5/8kV - 400A</b> Max diameter. cable: 3.35"(85mm) (3PHASE+1- GROUND+1PILOT)	
PM0840H-90	PM0840M-90	<b>Coupler 5/8kV - 400A</b> Max diameter. cable: 3.54"(90mm) (3PHASE+1- GROUND+1PILOT)	
PM0840H-95	PM0840M-95	<b>Coupler 5/8kV - 400A</b> Max diameter. cable: 3.74"(95mm) (3PHASE+1- GROUND+1PILOT)	
PM0840H-100	PM0840M-100	<b>Coupler 5/8kV - 400A</b> Max diameter. cable: 3.94"(100mm) (3PHASE+1- GROUND+1PILOT)	

Add suffix -F for semi-fixed application  
 Add suffix: -MI for mechanical interlocking  
 Add suffix: -MIPL for mechanical interlocking with padlock

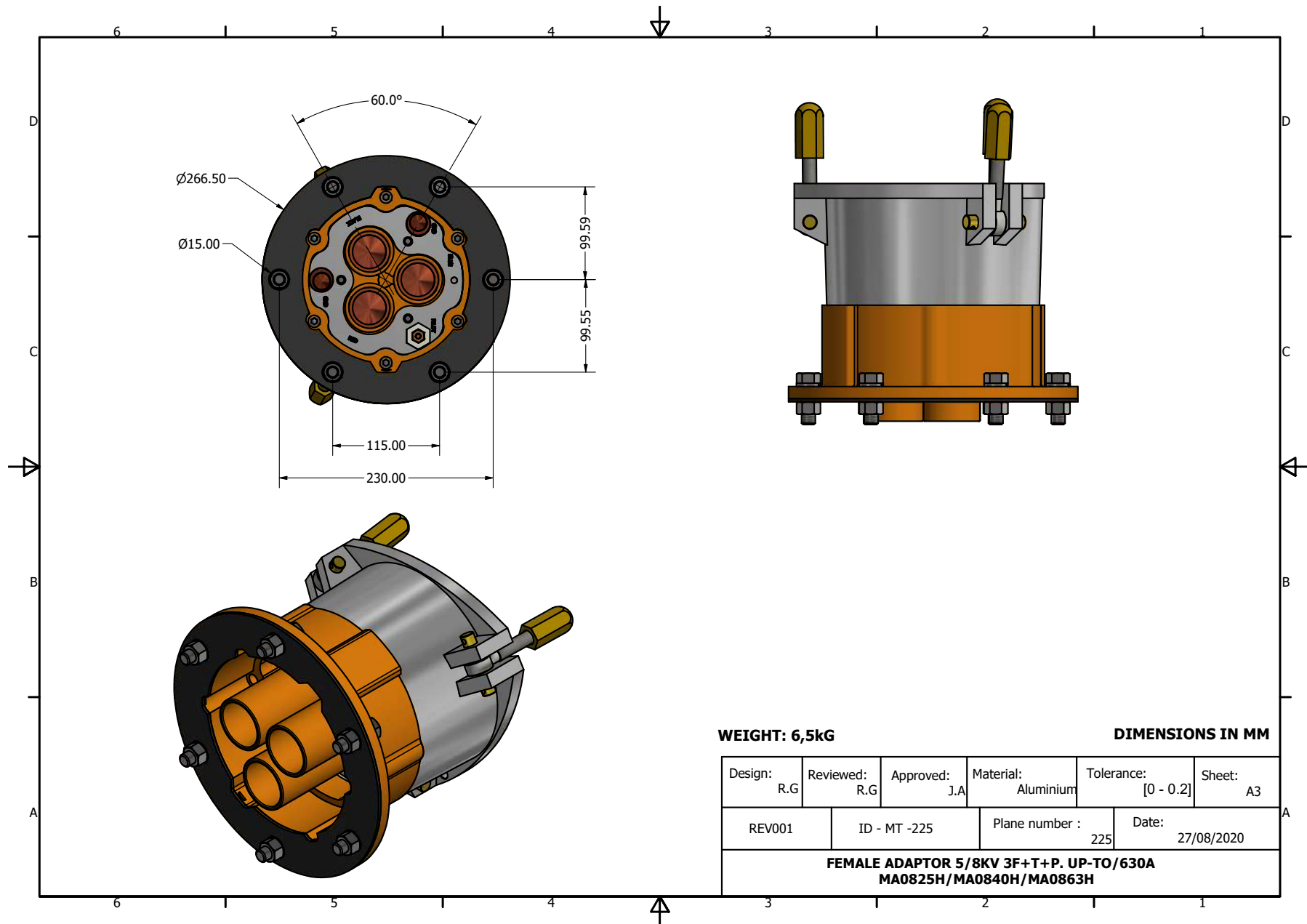
# PART NUMBER COUPLER 5/8kV 630A

PART NUMBER		DESCRIPTION	REFERENCIAL IMAGE
FEMALE	MALE		
PM0863H-85	PM0863M-85	Coupler 5/8kV - 630A Max diameter. cable: 3.35"(85mm) (3PHASE+1- GROUND+1PILOT)	 <p>Weight: 13.5kg Length: 490mm Values per connector</p>
PM0863H-90	PM0863M-90	Coupler 5/8kV - 630A Max diameter. cable: 3.54"(90mm) (3PHASE+1- GROUND+1PILOT)	
PM0863H-95	PM0863M-95	Coupler 5/8kV - 630A Max diameter. cable: 3.74"(95mm) (3PHASE+1- GROUND+1PILOT)	
PM0863H-100	PM0863M-100	Coupler 5/8kV - 630A Max diameter. cable: 3.94"(100mm) (3PHASE+1- GROUND+1PILOT)	

Add suffix -F for semi-fixed application  
Add suffix: -MI for mechanical interlocking  
Add suffix: -MIPL for mechanical interlocking with padlock

## MODULAR SYSTEM OF SUBPIECES

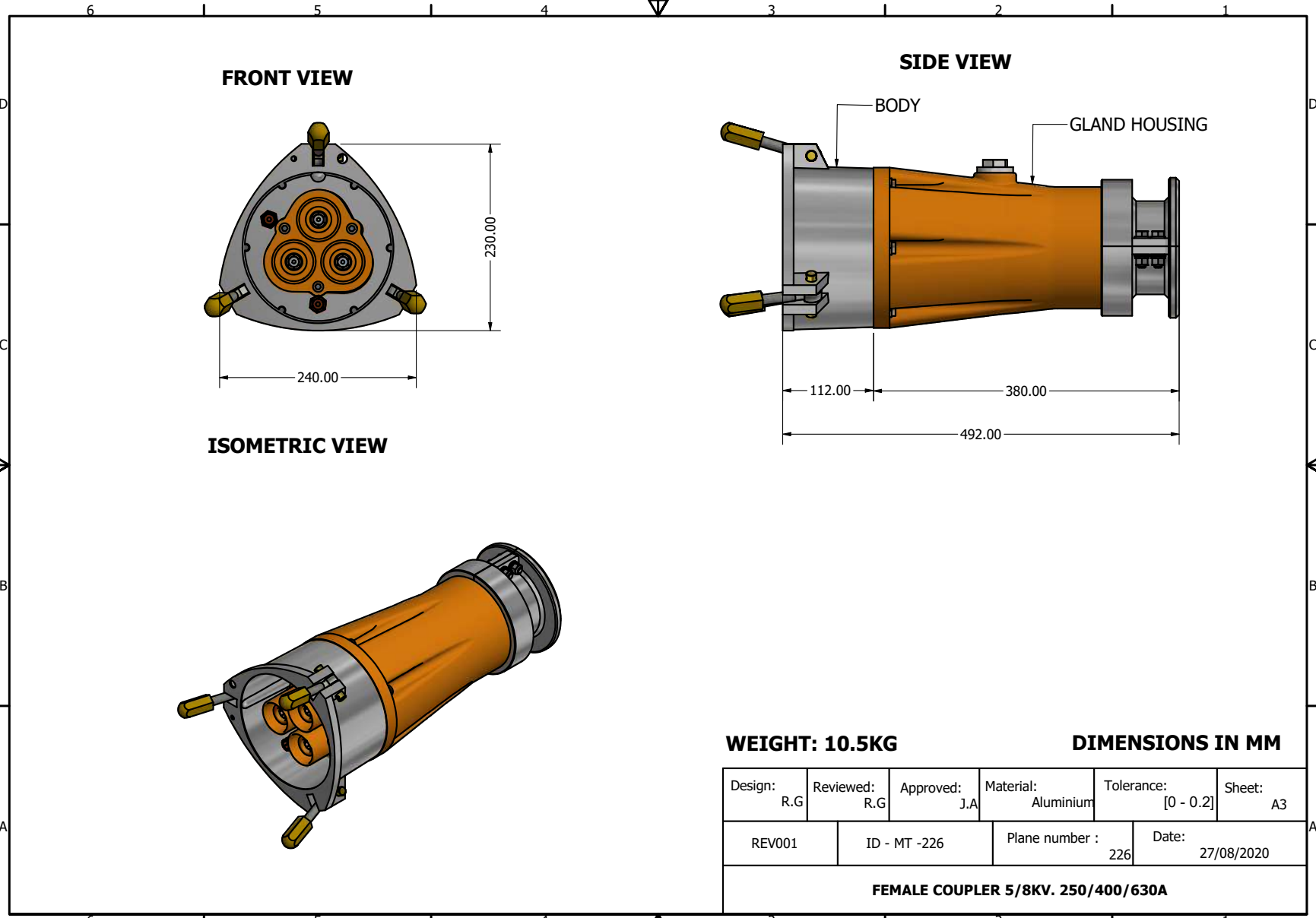




**WEIGHT: 6,5kg**

**DIMENSIONS IN MM**

Design: R.G	Reviewed: R.G	Approved: J.A	Material: Aluminium	Tolerance: [0 - 0.2]	Sheet: A3
REV001	ID - MT -225	Plane number : 225	Date: 27/08/2020		
<b>FEMALE ADAPTOR 5/8KV 3F+T+P. UP-TO/630A MA0825H/MA0840H/MA0863H</b>					



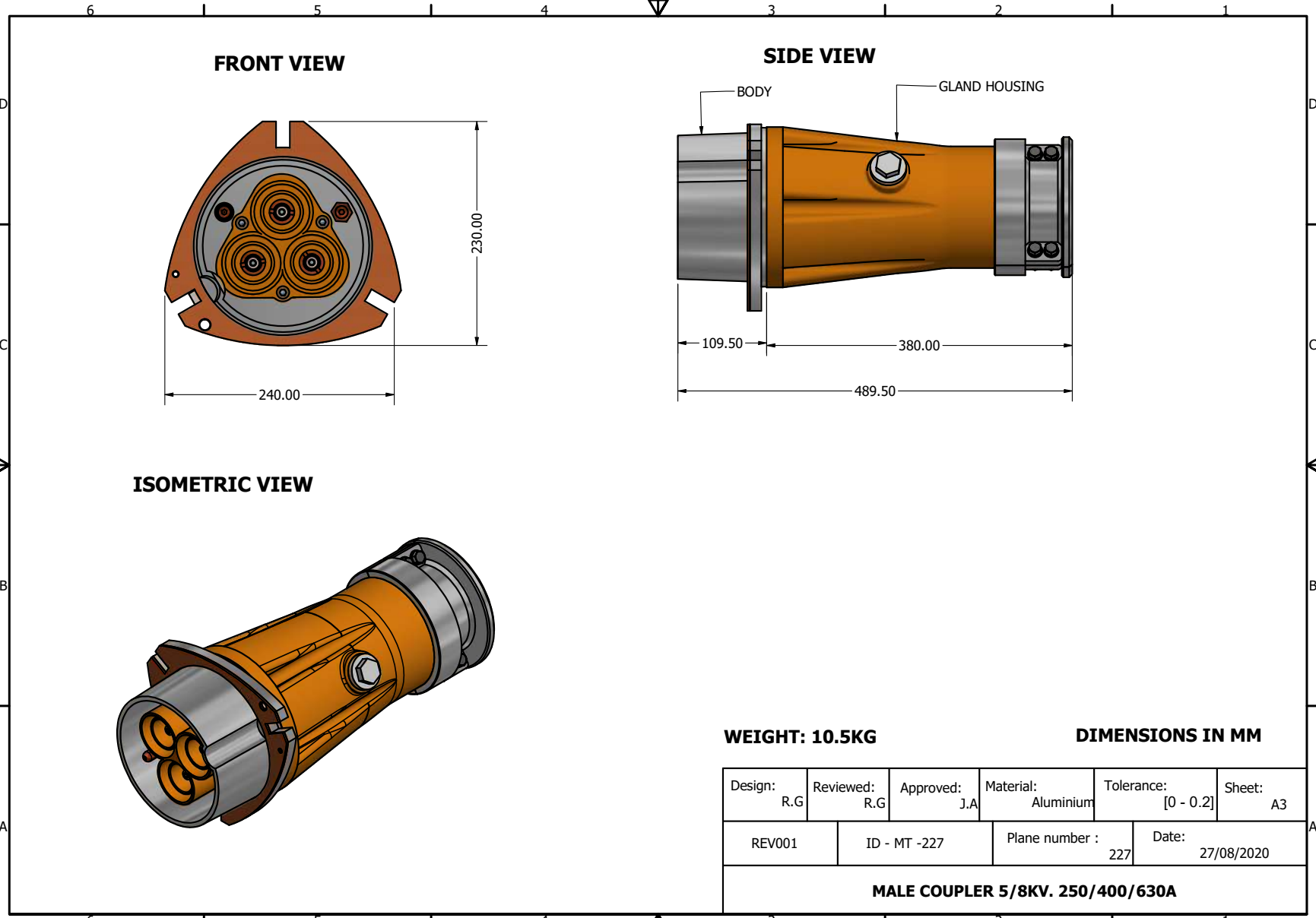
**WEIGHT: 10.5KG**

**DIMENSIONS IN MM**

Design: R.G	Reviewed: R.G	Approved: J.A	Material: Aluminium	Tolerance: [0 - 0.2]	Sheet: A3
REV001	ID - MT -226	Plane number : 226	Date: 27/08/2020		

**FEMALE COUPLER 5/8KV. 250/400/630A**

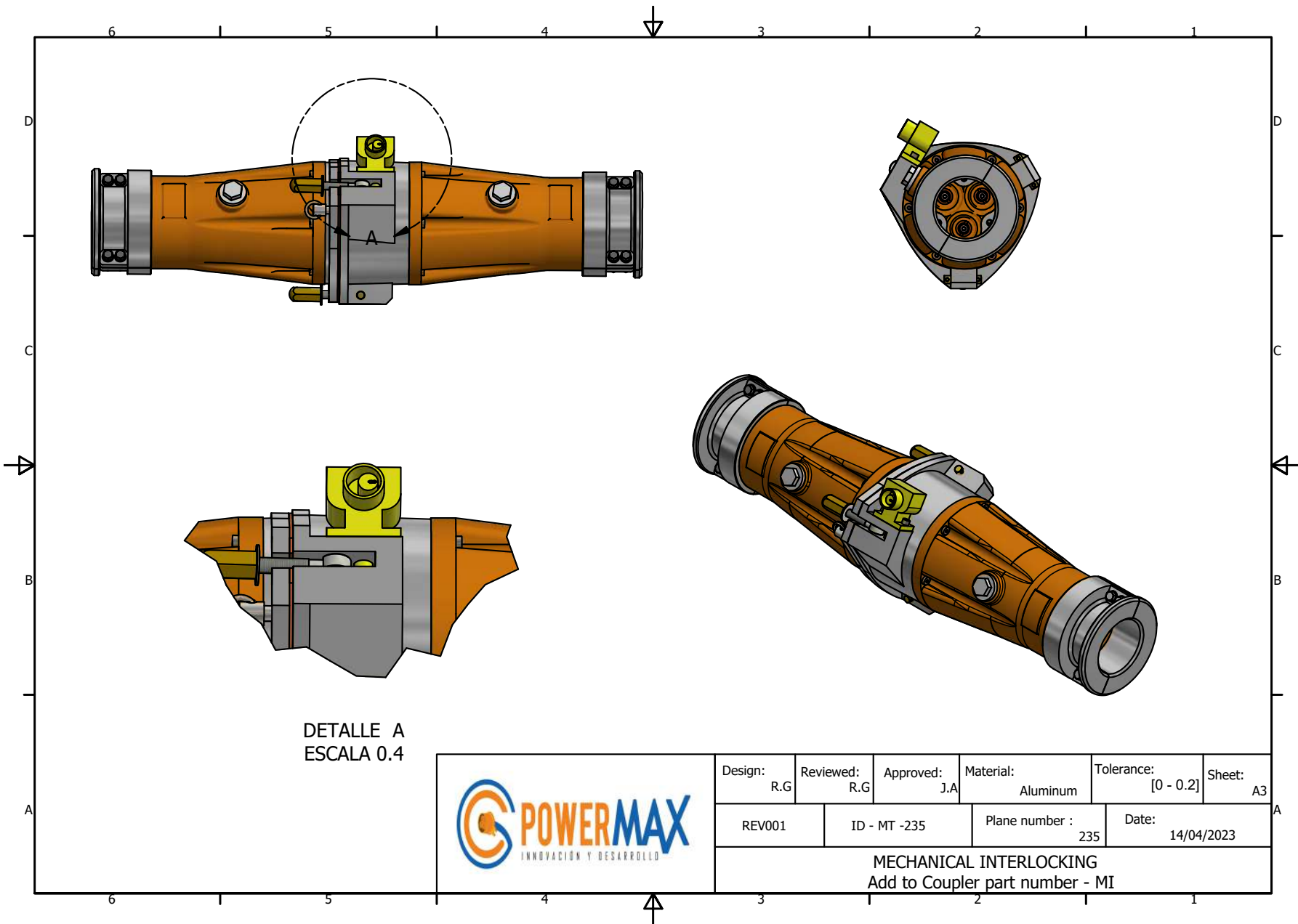





**WEIGHT: 10.5KG**

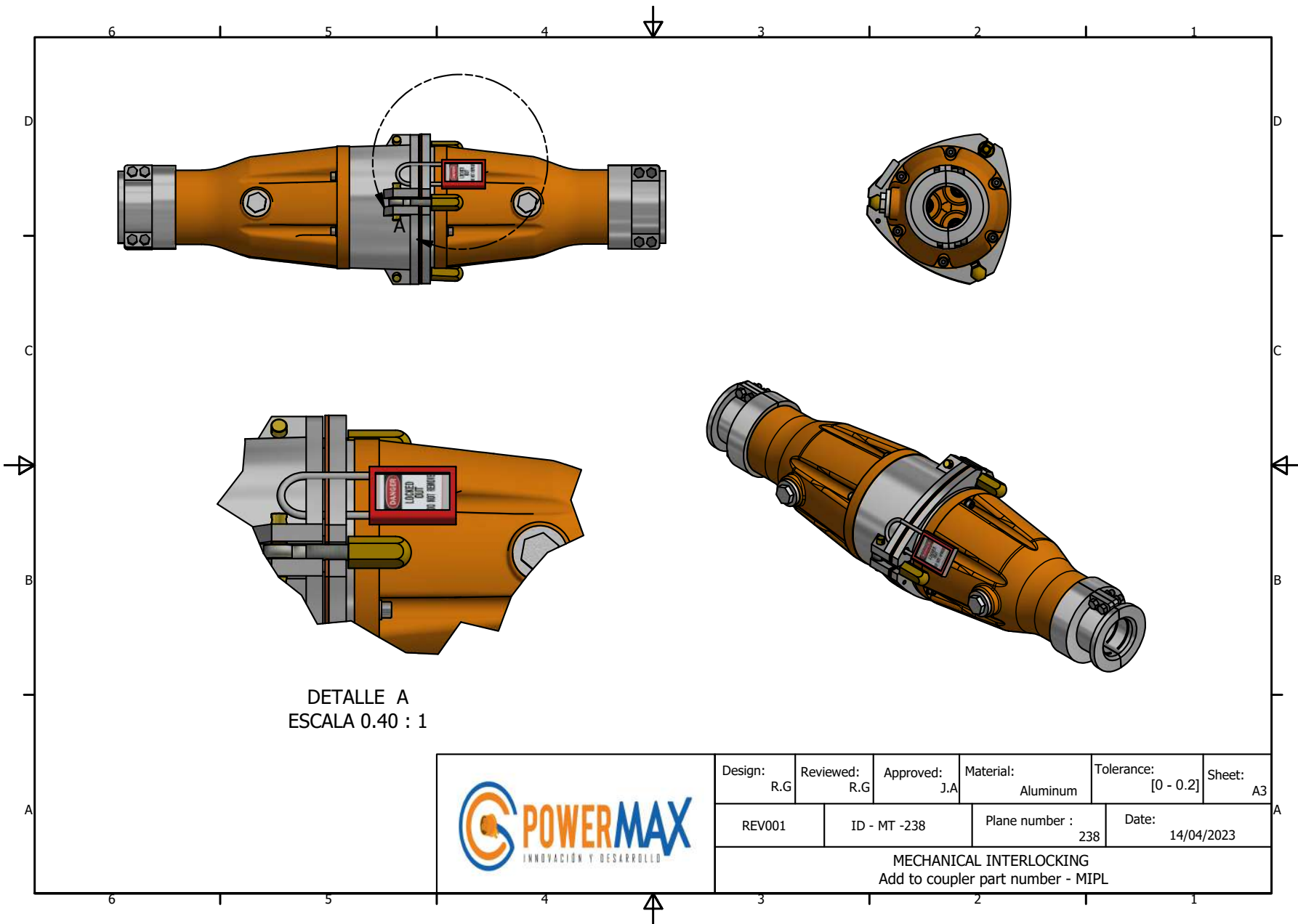
**DIMENSIONS IN MM**

Design: R.G	Reviewed: R.G	Approved: J.A	Material: Aluminium	Tolerance: [0 - 0.2]	Sheet: A3
REV001	ID - MT -227	Plane number : 227	Date: 27/08/2020		
<b>MALE COUPLER 5/8KV. 250/400/630A</b>					



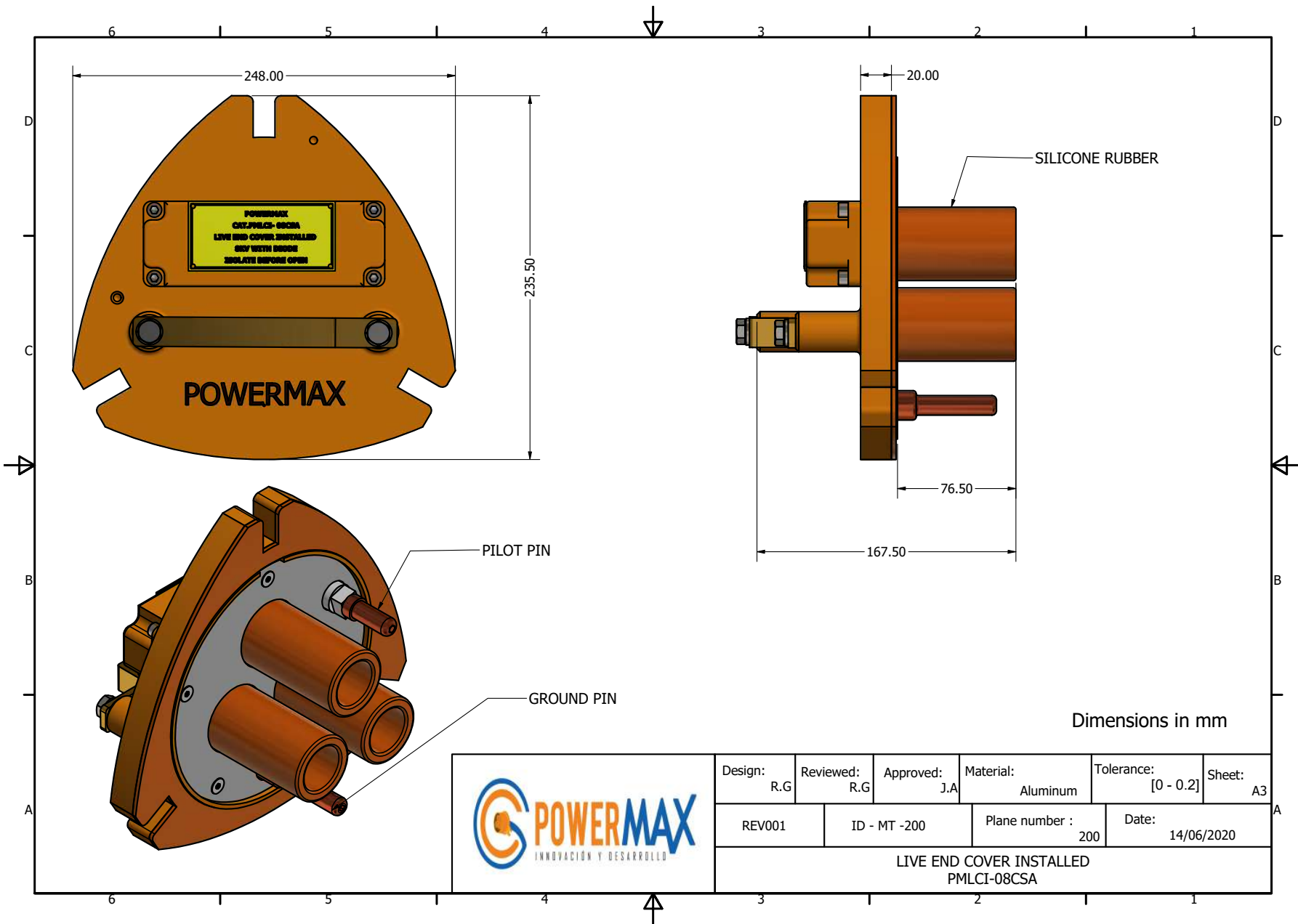
DETALLE A  
ESCALA 0.4

	Design: R.G	Reviewed: R.G	Approved: J.A	Material: Aluminum	Tolerance: [0 - 0.2]	Sheet: A3
	REV001	ID - MT -235	Plane number : 235	Date: 14/04/2023	MECHANICAL INTERLOCKING Add to Coupler part number - MI	




DETALLE A  
ESCALA 0.40 : 1

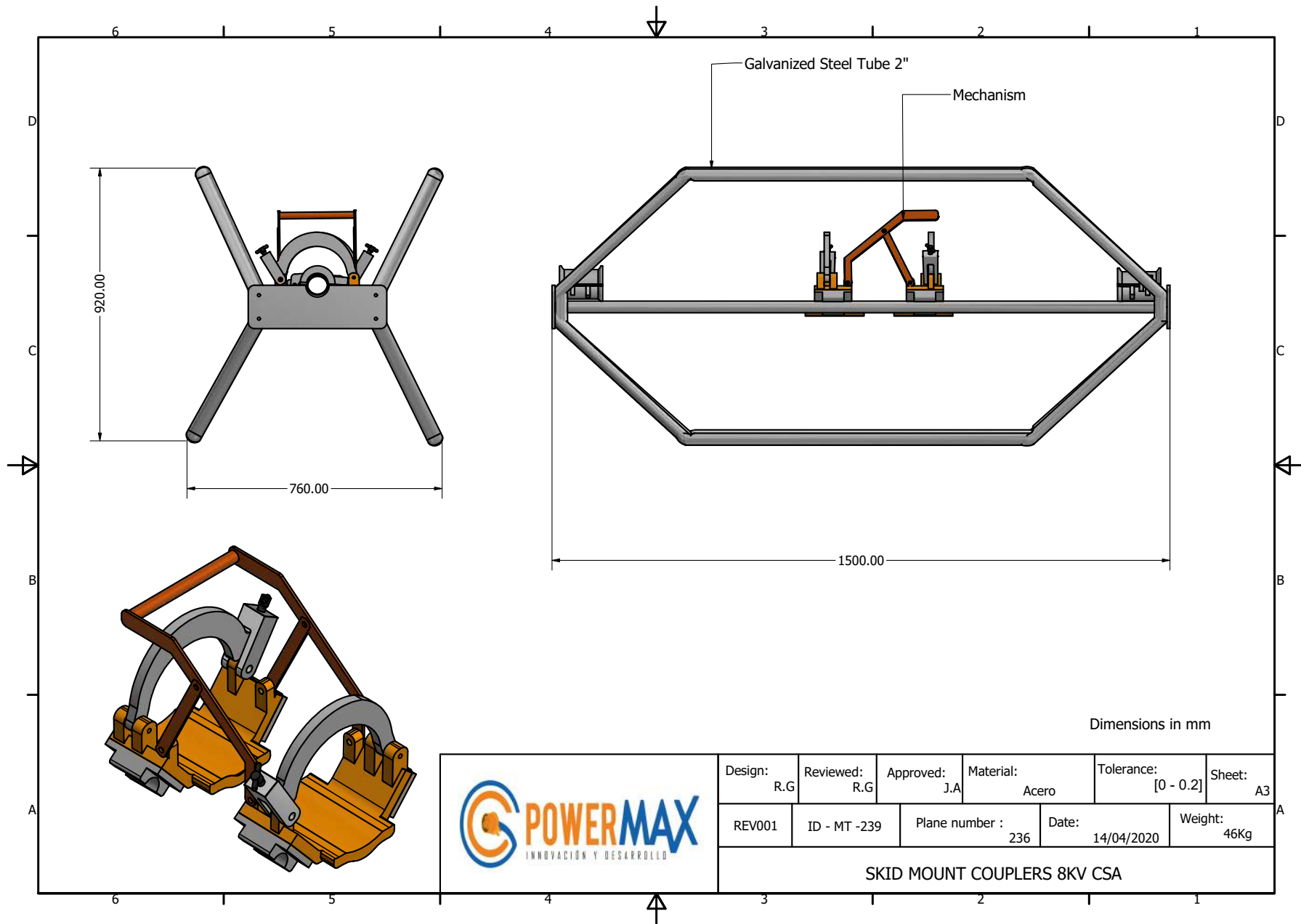
	Design:	Reviewed:	Approved:	Material:	Tolerance:	Sheet:
	R.G	R.G	J.A	Aluminum	[0 - 0.2]	A3
	REV001	ID - MT -238	Plane number :	Date:		
		238	14/04/2023	MECHANICAL INTERLOCKING Add to coupler part number - MIPL		

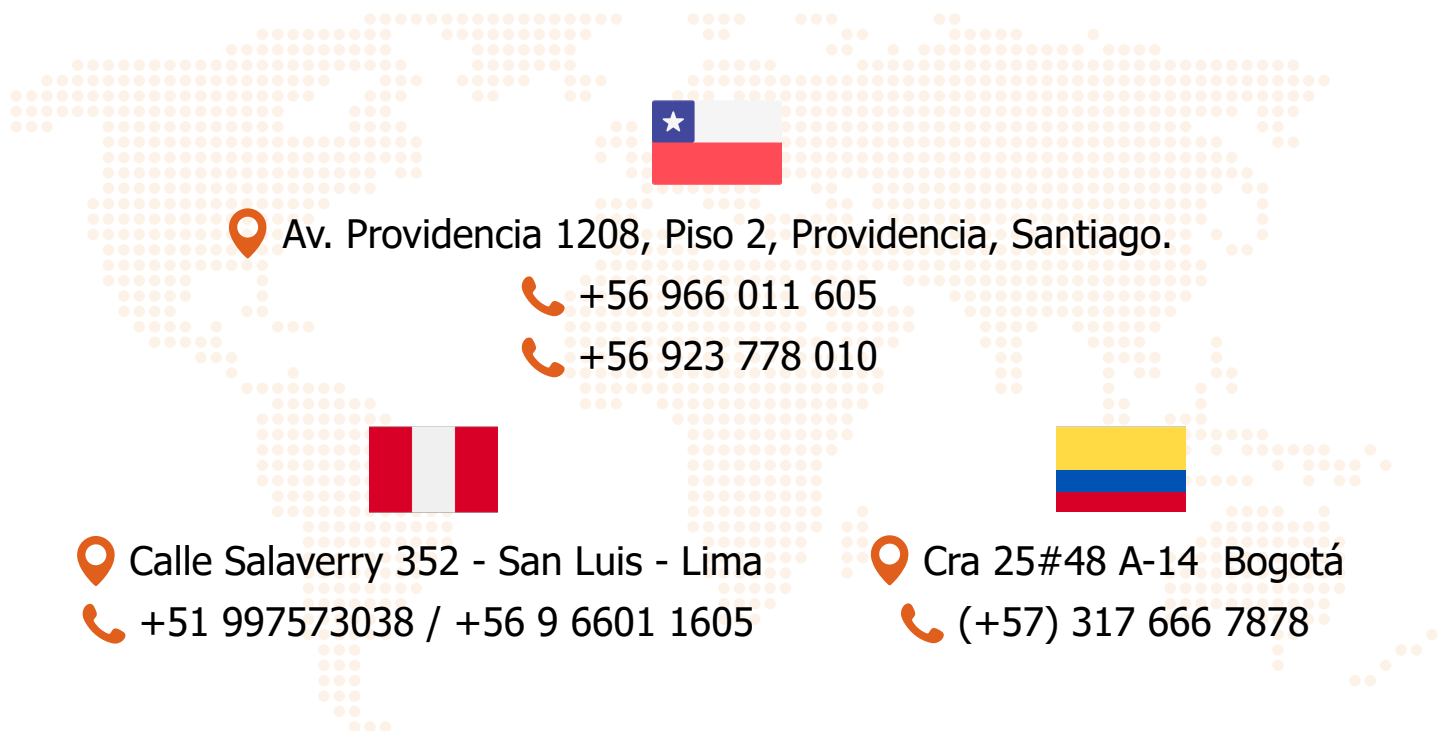


Dimensions in mm

	Design: R.G	Reviewed: R.G	Approved: J.A	Material: Aluminum	Tolerance: [0 - 0.2]	Sheet: A3
	REV001	ID - MT -200	Plane number : 200	Date: 14/06/2020	LIVE END COVER INSTALLED PMLCI-08CSA	








 Av. Providencia 1208, Piso 2, Providencia, Santiago.

 +56 966 011 605


 +56 923 778 010




 Calle Salaverry 352 - San Luis - Lima

 +51 997573038 / +56 9 6601 1605



 Cra 25#48 A-14 Bogotá

 (+57) 317 666 7878

 [VENTAS@POWERMAXLATAM.COM](mailto:VENTAS@POWERMAXLATAM.COM)

 [WWW.POWERMAXLATAM.COM](http://WWW.POWERMAXLATAM.COM)