



15kV 500/630/700A CSA STANDARD CABLE COUPLERS

FIXED AND PORTABLE CABLE SYSTEM





Couplers are utilized in industrial, oil and gas, surface and underground mining, strip, and pit operations. Couplers provide safe, convenient means for connecting fixed or portable cable rated up to 15000 volt and up to 700 Amperes, copper or aluminum conductor to mining equipment, electric shovels, drag lines, loaders, barges, tunneling machines, portable substations, portable junction boxes, or for joining lengths of high voltage cables.

CHARACTERISTICS

- Corrosion resistant aluminum ASTM / ALCAN.
- Durable insulators that resist cracking or other defects that can lead to tracking.
- Copper male and female contacts 99.9% ASTM B-187.
- Cable entry and gripping, consisting of a clamp and sealing arrangement, which will provide a secure grip on the cable and a watertight seal.
- Weather resistant: IP68.
- Replaceable parts.
- The use of compound insulation is recommended for place with high humidity and several temperature changes.

- 1 minute dry withstand AC: 34 kV.
- 15 minutes dry withstand DC: 53 kV.
- Impulse voltage 1.2x50 μ s: 95kV BIL.
- IEEE-386: IEEE Standard for Separable Insulated Connector Systems for Power Distribution Systems Rated 2.5 kV through 35 kV
- CSA C22.2 N°298-16: High Voltage Couplers
- IEC 60529: Degrees of protection IP
- CAN/CSA M421: The ground pin makes first and breaks last and the pilot pin makes last and breaks first.

APPLICATIONS

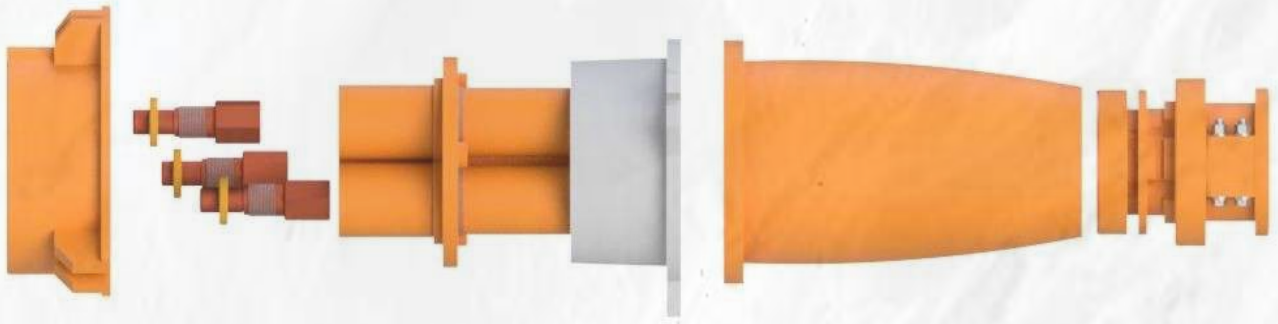
- Electric shovels
- Drilling rigs
- Tunnel boring machines
- Pumps
- Portable substations



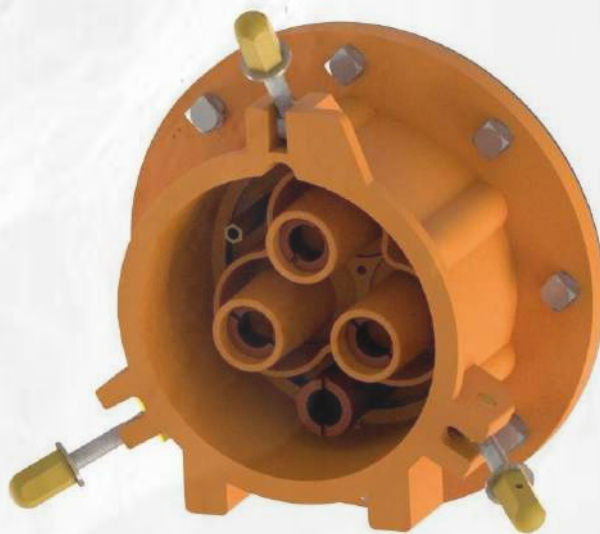
Part Number		Description	Referential image
Cable mount Female	Cable mount Male		
PM1550F-45	PM1550M-45	Coupler 15 kV – 500A Max diameter. Cable: 1.78" (45mm) (3PHASE +1 or 2 GROUND+1PILOT)	 <p>Weight: 20 kg Length: 645 mm Values per coupler</p>
PM1550F-50	PM1550M-50	Coupler 15 kV – 500A Max diameter. Cable: 1.96" (50mm) (3PHASE +1 or 2 GROUND+1PILOT)	
PM1550F-55	PM1550M-55	Coupler 15kV - 500A Max diameter. cable: 2.16"(55mm) (3PHASE +1 or 2 GROUND+1PILOT)	
PM1550F-60	PM1550M-60	Coupler 15kV - 500A Max diameter. cable: 2.36"(60mm) (3PHASE +1 or 2 GROUND+1PILOT)	
PM1550F-65	PM1550M-65	Coupler 15kV - 500A Max diameter. cable: 2.55"(65mm) (3PHASE +1 or 2 GROUND+1PILOT)	
PM1550F-70	PM1550M-70	Coupler 15kV - 500A Max diameter. cable: 2.55"(70mm) (3PHASE +1 or 2 GROUND+1PILOT)	
PM1550F-75	PM1550M-75	Coupler 15kV - 500A Max diameter. cable: 2.95"(75mm) (3PHASE +1 or 2 GROUND+1PILOT)	
PM1550F-80	PM1550M-80	Coupler 15kV - 500A Max diameter. cable: 3.15"(80mm) (3PHASE +1 or 2 GROUND+1PILOT)	

- Add suffix: **-F** for semi-fixed application
- Add suffix: **-MI** for mechanical interlocking
- Add suffix: **-MIPL** for mechanical interlocking with padlock

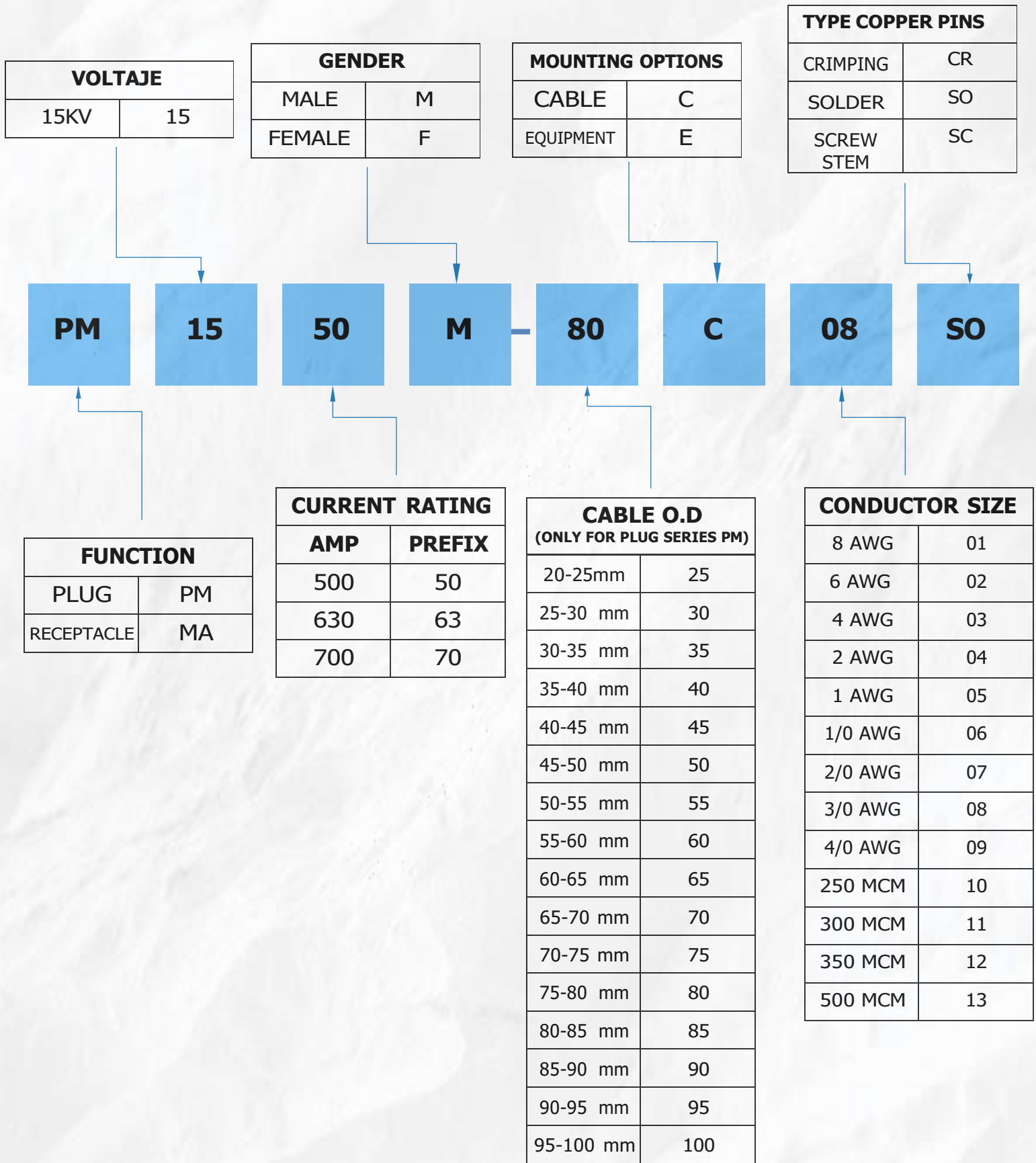
MODULAR SYSTEM PARTS



EQUIPMENT MOUNT FEMALE 15 KV 500/630/700 A.



QUICK SELECTION

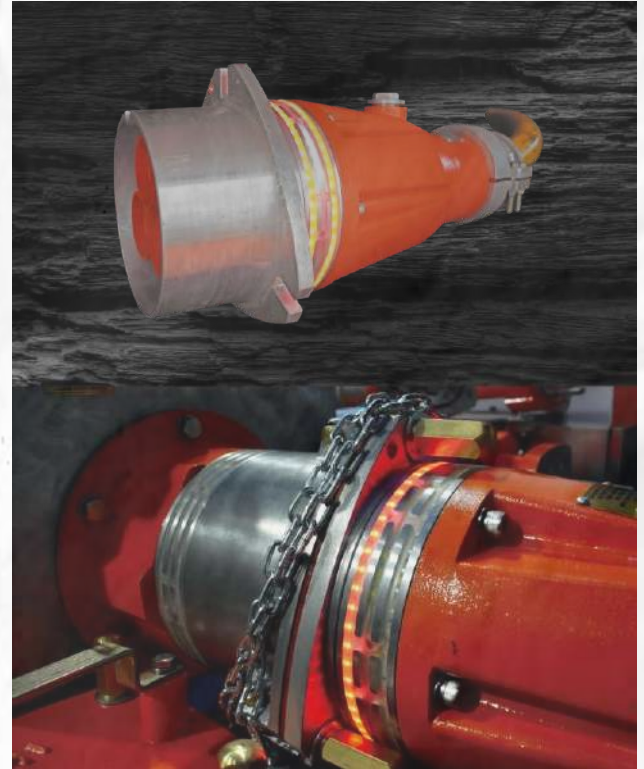


LIVE LINE INDICATOR RING

- When unplugged, ground check conductor is firstly disconnected.
- This signal activates the protection system, disconnecting the cable (voltage and current, all phases).
- So, when unplugging the operator relays on the protection system in order not to receive an electroshock!!.
- With the Live-Line Indicator Ring, the operator can easily check the absence of medium voltage (MV) and unplug with confidence!.
- Complying with the "5 Golden rules working with MV": 3rd rule: Detect the absence of MV when the ring is off.

PEACE OF MIND!

To request, add the suffix LED to standard part number. **EXAMPLE: PM0825M-55 LED.**

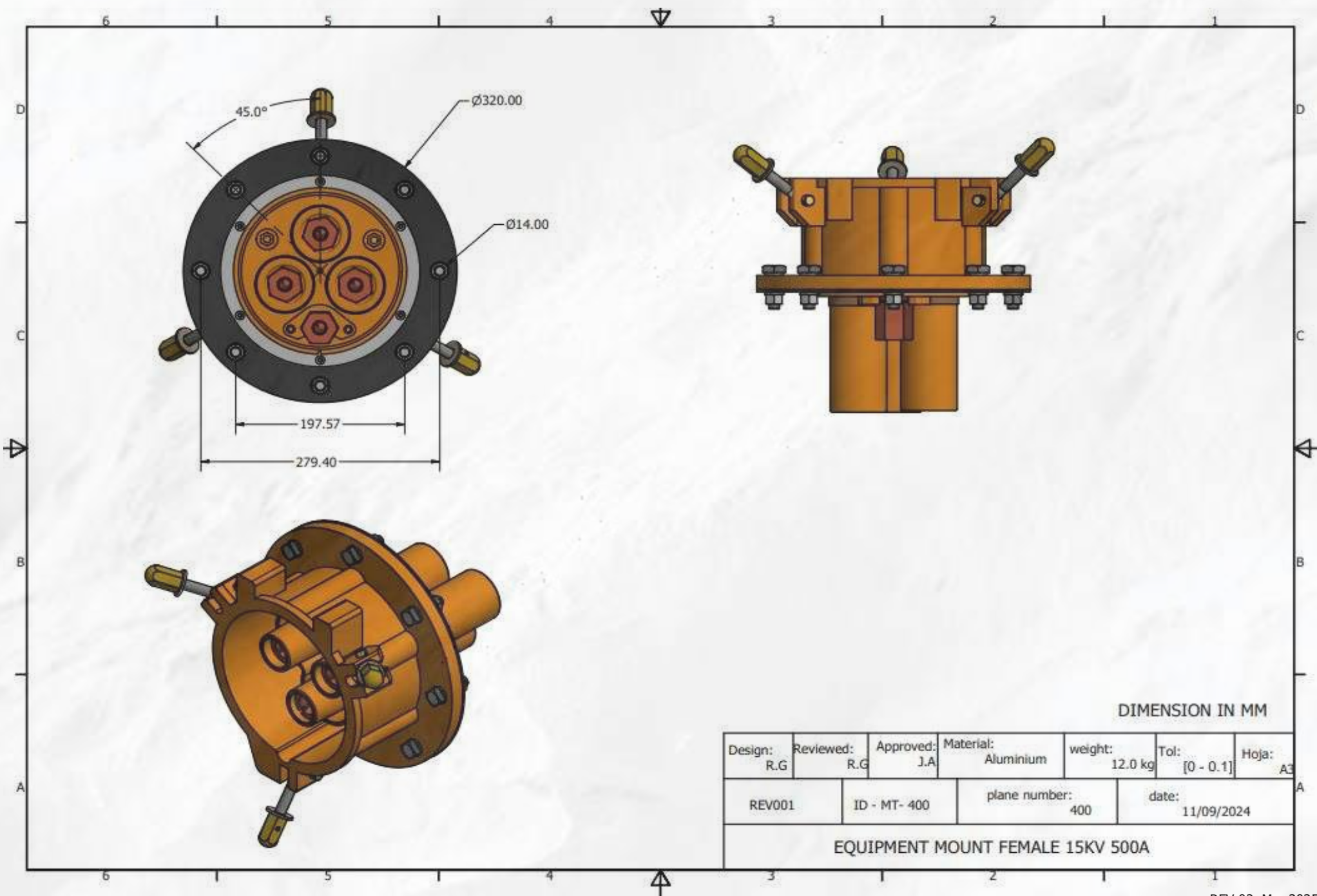


SPLITTER BOX 3 WAY 8,15 y 25Kv



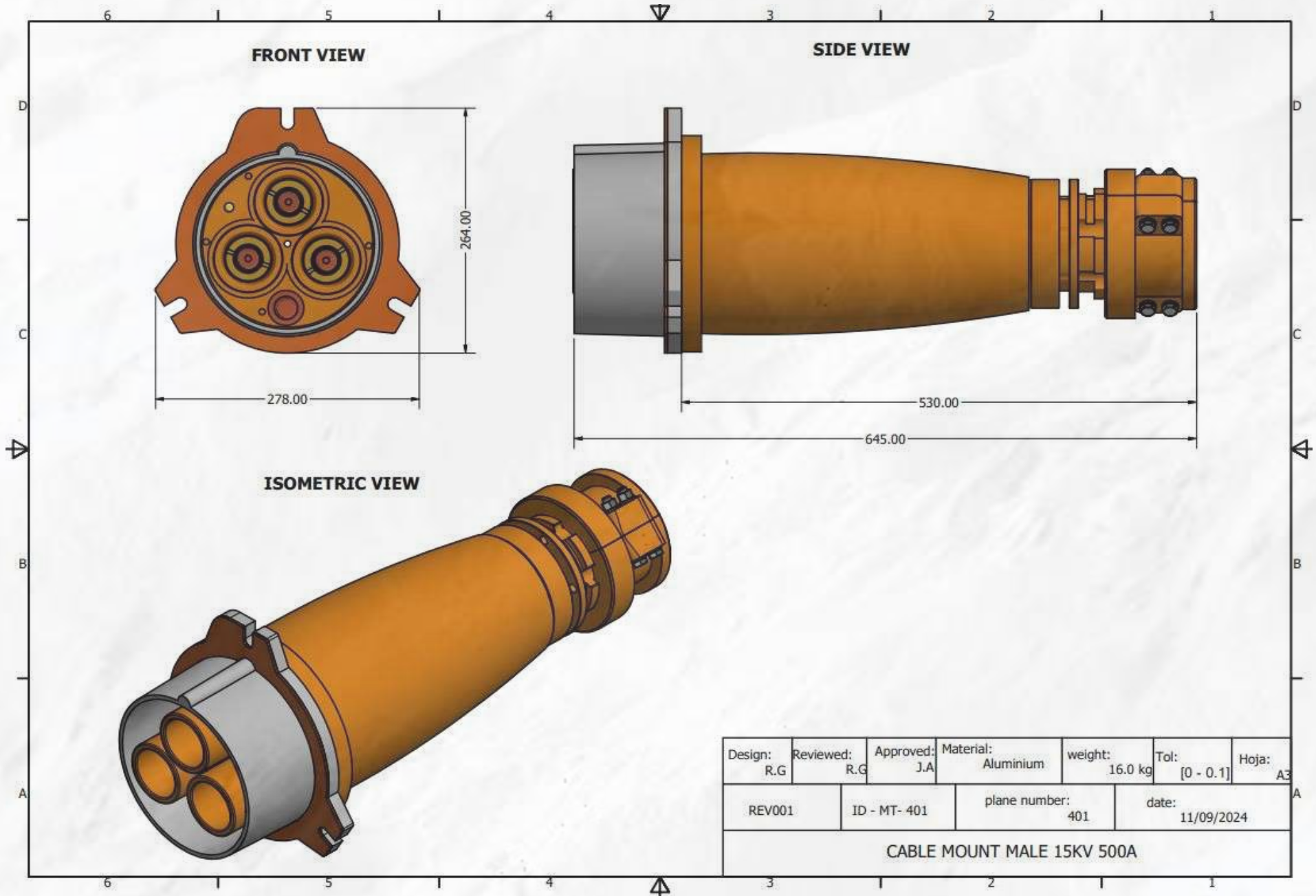
SKIDS FOR 5, 8, 15 AND 25KV CABLE COUPLERS





DIMENSION IN MM

Design: R.G	Reviewed: R.G	Approved: J.A	Material: Aluminium	weight: 12.0 kg	Tol: [0 - 0.1]	Hoja: A3
REV001	ID - MT- 400	plane number: 400	date: 11/09/2024			
EQUIPMENT MOUNT FEMALE 15KV 500A						



Design: R.G	Reviewed: R.G	Approved: J.A	Material: Aluminium	weight: 16.0 kg	Tol: [0 - 0.1]	Hoja: A3
REV001	ID - MT- 401	plane number: 401	date: 11/09/2024			
CABLE MOUNT MALE 15KV 500A						



Av. Providencia 1208, Piso 2, Santiago-Chile



+56 966 011 605



+56 923 778 010



Calle Salaverry 352 - San Luis - Lima



+51 997573038 / +56 9 6601 1605



Cra 25#48 A-14 Bogotá



(+57) 317 666 7878



VENTAS@POWERMAXLATAM.COM



WWW.POWERMAXLATAM.COM